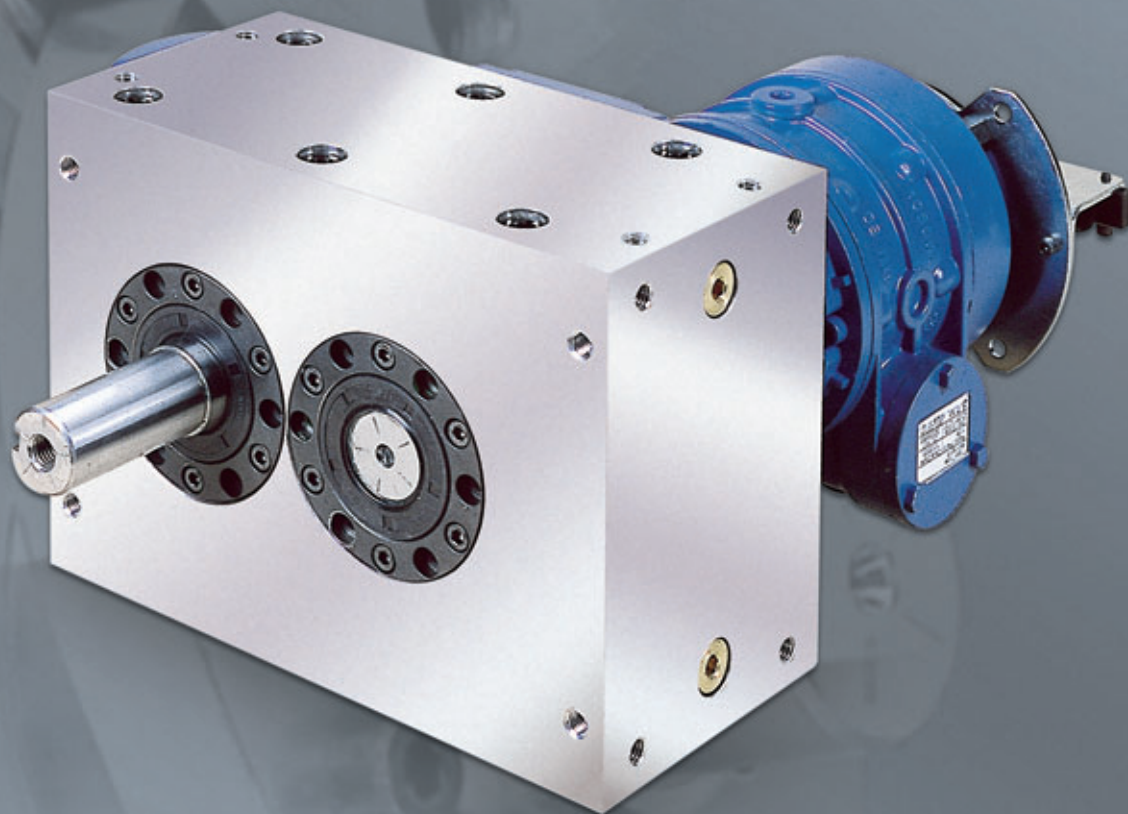


Serie PA



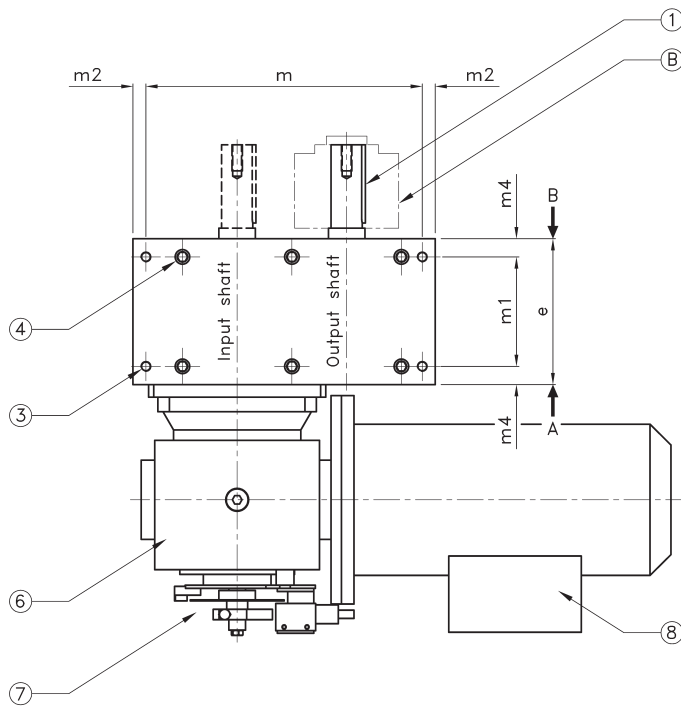
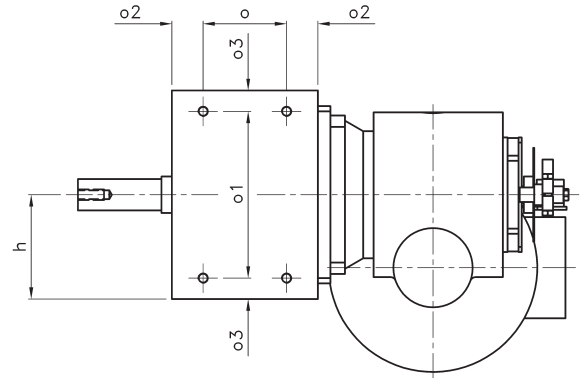
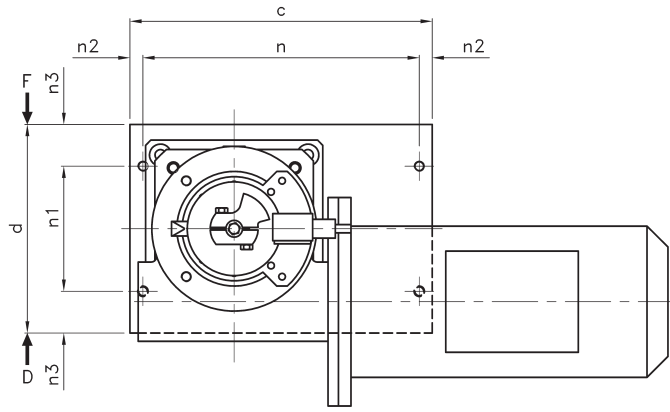
**SOPAP**



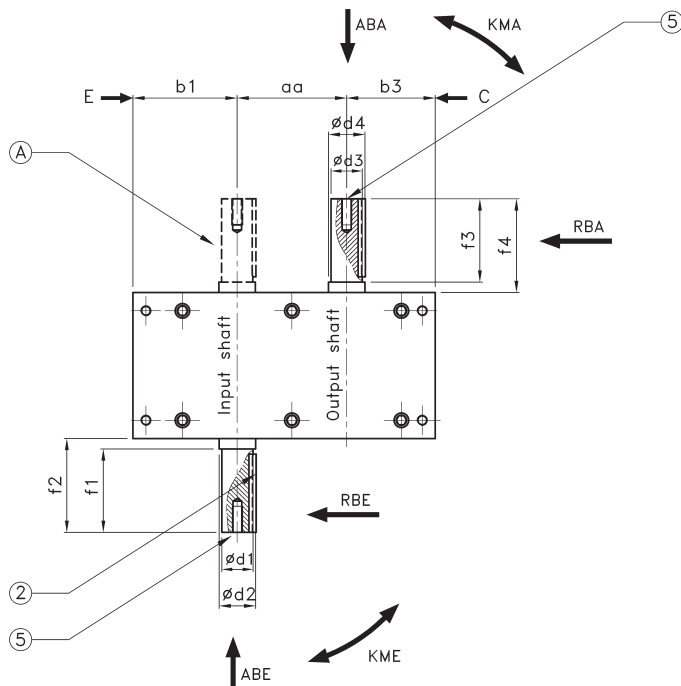
**PA 65 - 130**



# PA 65 - 130



- ① Positioning of the key in the dwell phase (stop period)
- ② Positioning of the key in the dwell phase (middle of the stop period)
- ③ 4 threaded holes **P** on all faces
- ④ 6 assembly stud bolts on faces D and F
- ⑤ Threaded holes **Y**
- ⑥ Reducer
- ⑦ Cam command for motor stop
- ⑧ Brake-motor



## Extra features on request

- (A) Double input shaft
- (B) Torque limiter at output

Dimensions without tolerances according to JS 13  
Key normalised under DIN 6885

3 years warranty on standard products.

## Dimensions

Size	PA 65	PA 80	PA 105	PA 130
aa	65	80	105	130
b1	65	85	100	125
b3	50	65	85	105
c	180	230	290	360
d	130	170	200	250
Ø d1 k6	19	28	30	42
Ø d2	20	30	35	45
Ø d3 k6	19	28	30	42
Ø d4	20	30	35	45
e	90	115	140	170
f1	40	60	80	110
f2	45,5	67,5	90	120
f3	40	60	80	110
f4	45,5	67,5	90	120
h	65	85	100	125
m	160	210	265	320
m1	40	60	105	100
m2	10	10	12,5	20
m4	25	27,5	17,5	35
n	165	210	265	320
n1	80	120	120	150
n2	7,5	10	12,5	20
n3	25	25	40	50
o	65	80	80	140
o1	105	145	160	200
o2	12,5	17,5	30	15
o3	12,5	12,5	20	25
P	M6 x 12	M8 x 15	M10 x 20	M12 x 20
Y	M6 x 15	M10 x 20	M10 x 25	M16 x 35
Weight (kg)	~ 7	~ 15	~ 25	~ 52

Dimensions for reducers and motors: please contact us.

### Remarks:

- This intermittent motion mechanism includes two coupled cams and a radial roller gear hub for the intermittent command of division plates, conveyors, etc.
- Vibrationless positive motion
- Lifetime grease
- Housing machined on all faces allowing all mounting positions
- Possible supply of single parts (cams and turret)
- Available with gear reducer or motor gear reducer
- Please avoid the mounting of elastic elements on the input and output shafts
- The inversion of the input shaft rotation will also provide an inversion of output shaft rotation without changing the kinematical characteristics

## Technical characteristics

Size	65	80	105	130
Max. allowable axial load input shaft <b>ABE</b> (daN)	16	37	55	80
Max. allowable radial load input shaft <b>RBE</b> (daN)	65	140	200	250
Max. allowable tilting torque input shaft <b>KME</b> (daNm)	2,6	8,4	16	27,5
Max. allowable axial load output shaft <b>ABA</b> (daN)	32	75	110	160
Max. allowable radial load output shaft <b>RBA</b> (daN)	65	140	200	250
Max. allowable tilting torque output shaft <b>KMA</b> (daNm)	2,6	8,4	16	27,5
Additional fixed torque Mf1 (daNm)	1,2	1,5	2,5	3,5

### Indexing unit Number of stops:

1 - 2 - 3 - 4 - 6 - 8

Further numbers of stop on request

### Oscillating unit Angle of oscillation:

15° - 20° - 30° - 45°

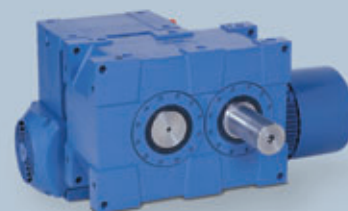
Further angles of oscillation on request



# SOPAP



SOPAP ensures quality and reliability



## France

SOPAP SAS  
Z.A.M Châlons Nord  
1 Rue des Vignettes  
F-51520 La Veuve

Téléphone: +33 (0) 3 26 69 21 21  
Télécopie: +33 (0) 3 26 69 21 31  
E.mail: info.fr@sopap.com

## Deutschland Süd

SOPAP GmbH  
Mittelöschstrasse 21  
D-88213 Ravensburg

Telefon: +49 (0) 751 9507  
Telefax: +49 (0) 751 92583  
E.mail: info-sued.de@sopap.com

## España

SOPAP Automatización S.L.  
%Las Cruces nº6 – Bajo C  
E-28230 Las Rozas  
Madrid

Teléfono: +34 91 636 01 39  
Teléfax: +34 91 636 02 64  
E.mail: info.es@sopap.com

## Benelux

ADR  
Solvayweg 18  
6049 CP Herten-Roermond  
Nederland

Telefoon: +31 475 337379  
Fax: +31 475 337444  
E.mail: info.nl@sopap.com

## Brasil

Triaxis  
Rua Bulgária, 215  
Vila Santa Luzia  
09871-100 Sao Bernardo do Campo

Telefone: +55 11 4361 4977  
Fax: +55 11 4361 9004  
E.mail: info.br@sopap.com

## Deutschland Mitte

Konstruktionsbüro Becker  
Hch. Von Brentanoweg 2  
D-64683 Einhausen

Telefon: +49 (0) 6251 856601  
Telefax: +49 (0) 6251 987701  
E.mail: info-mitte.de@sopap.com

## USA

SOPAP LLC  
560-A Brookshire Road  
29651 Greer  
South Carolina

Telephone: +1 864 801 1450  
Fax: +1 864 801 1460  
E.mail: info-sc.usa@sopap.com

## USA

Rudy V. Colombi  
2696 Red Fox Trail  
48098 Troy  
Michigan

Telephone: +1 248 840 2377  
Fax: +1 248 540 7535  
E.mail: info-mi.usa@sopap.com

## Canada

DOLYX trading inc.  
171 Nicholson Crt.  
L7N 3N5 Burlington  
Ontario

Telephone: +1 905 631 6615  
Fax: +1 905 631 6244  
E.mail: info-on.ca@sopap.com