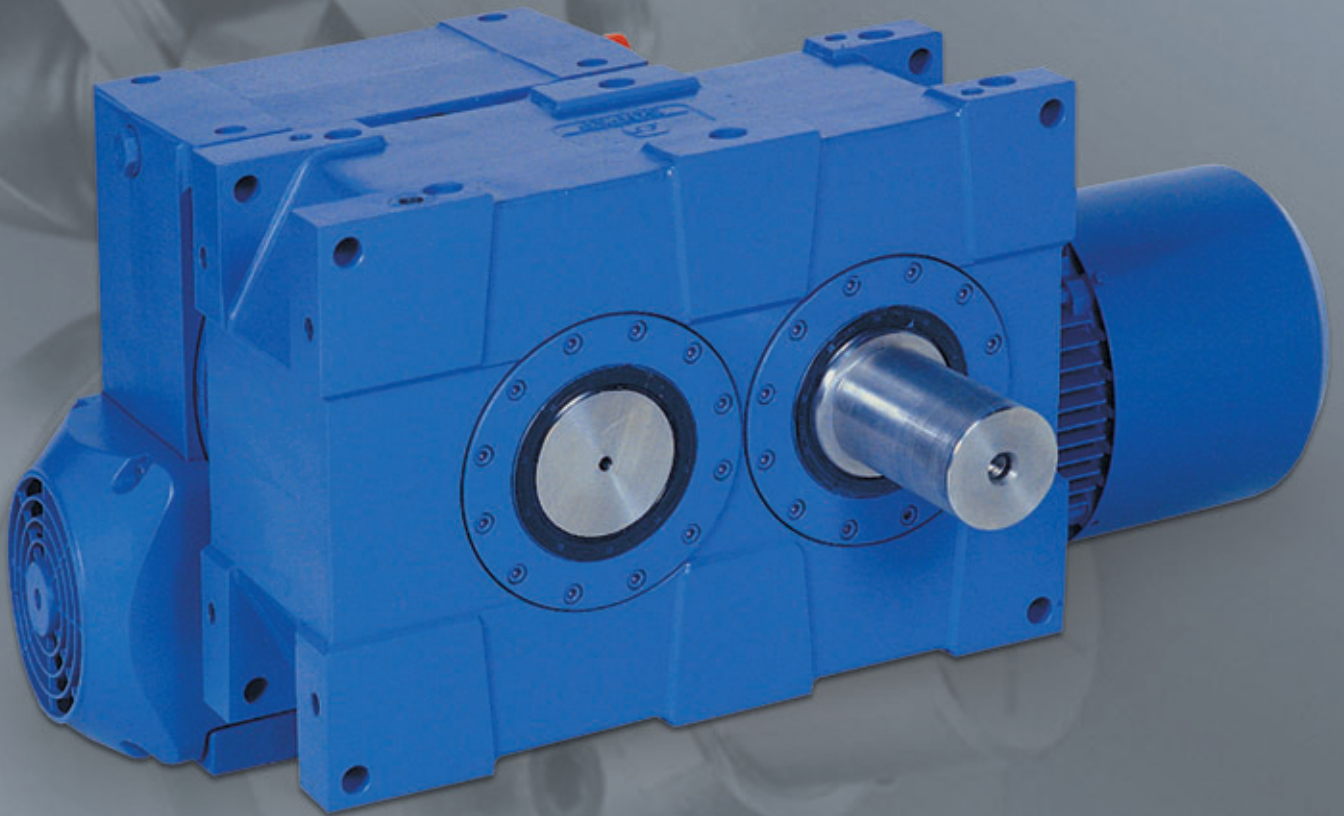


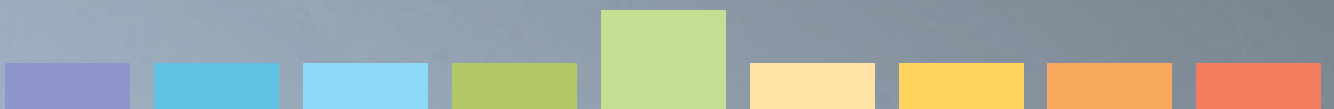
Serie PA



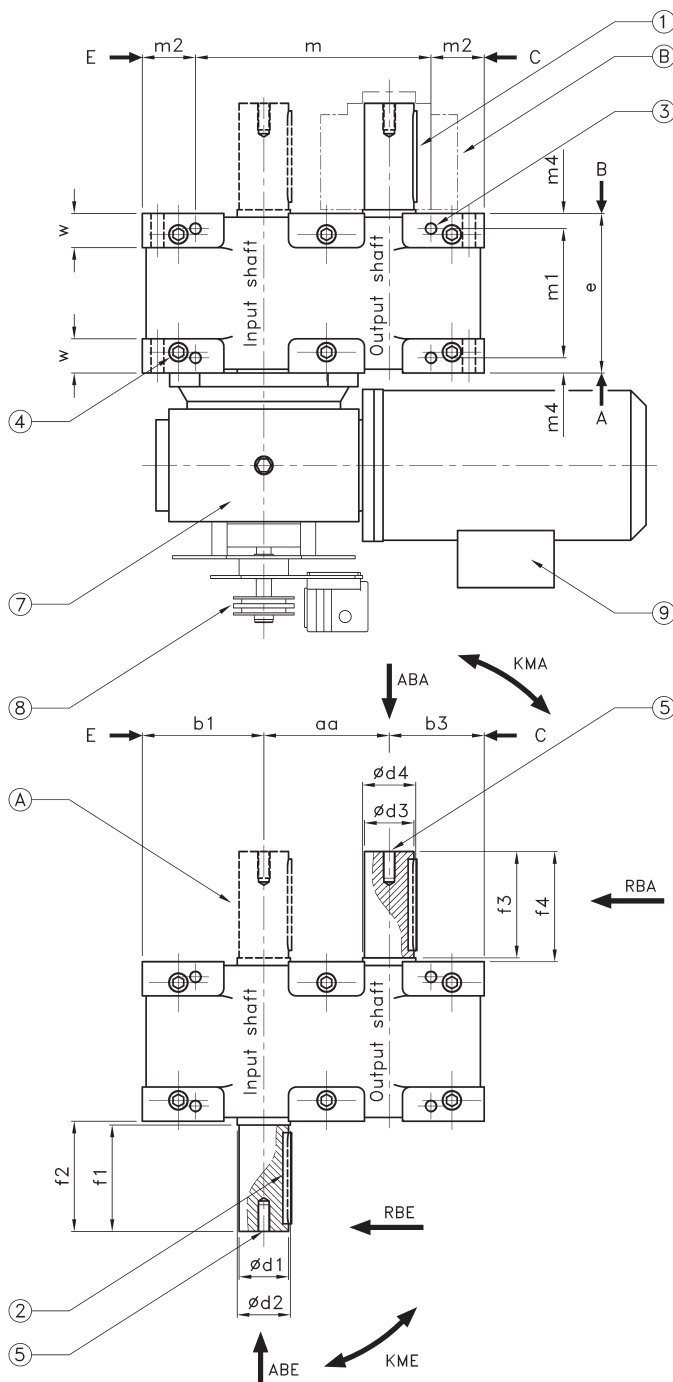
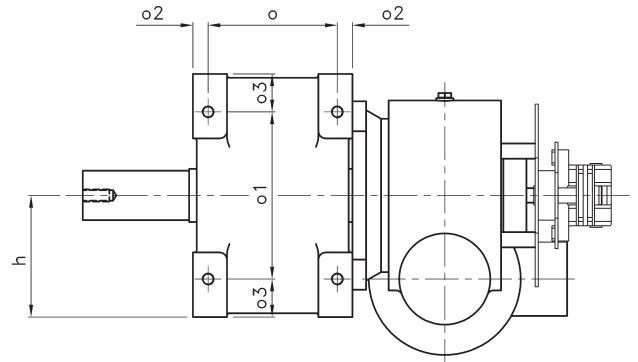
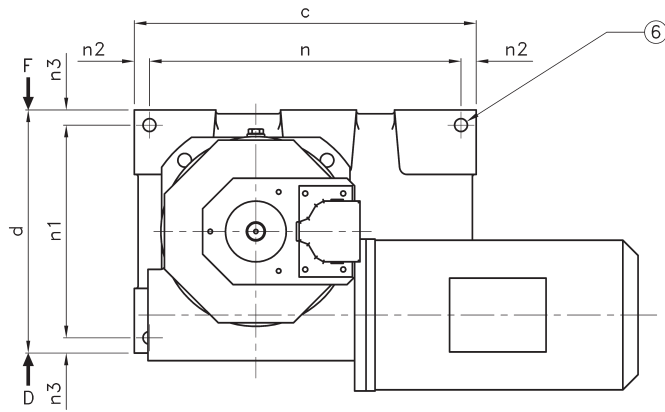
**SOPAP**



PA 165 - 315



# PA 165 - 315



- ① Positioning of the key in the dwell phase (stop period)
- ② Positioning of the key in the dwell phase (middle of the stop period)
- ③ 4 threaded holes **P** on faces C, D, E and F
- ④ 6 assembly stud bolts on faces D and F
- ⑤ Threaded hole **Y**
- ⑥ 4 holes  $\text{Ø } q$  on faces A and B
- ⑦ Reducer
- ⑧ Cam command for motor stop
- ⑨ Brake-motor

## Extra features on request

- Ⓐ Double input shaft
- Ⓑ Torque limiter at output

Dimensions without tolerances according to JS 13

Key normalised under DIN 6885

3 years warranty on standard products.

## Dimensions

Size	PA 165	PA 200	PA 250	PA 315
aa	165	200	250	315
b1	160	195	245	310
b3	125	145	195	245
c	450	540	690	870
d	320	390	490	620
Ø d1 k6	65	80	100	125
Ø d2	70	100	120	150
Ø d3 k6	65	80	100	125
Ø d4	70	100	120	150
e	210	240	290	390
f1	140	160	190	220
f2	145	165	195	225
f3	140	160	190	220
f4	145	165	195	225
h	160	195	245	310
m	310	400	490	630
m1	170	200	240	340
m2	70	70	100	120
m4	20	20	25	25
n	410	500	640	820
n1	280	350	440	570
n2	20	20	25	25
n3	20	20	25	25
o	170	200	240	340
o1	220	250	350	480
o2	20	20	25	25
o3	50	70	70	70
P	M16 x 30	M16 x 30	M20 x 40	M20 x 40
Ø q	17	19	22	22
w	40	48	50	50
Y	M16 x 35	M16 x 35	M20 x 50	M20 x 50
Weight (kg)	~ 102	~ 172	~ 320	~ 570

Dimensions for reducers and motors: please contact us.  
Dimensions PA 400, PA 650, PA 800 on request.

### Remarks:

- This intermittent motion mechanism includes two coupled cams and a radial roller gear hub for the intermittent command of division plates, conveyors, etc.
- Vibrationless positive motion
- Lifetime grease
- Possible supply of single parts (cams and turret)
- Available with gear reducer or motor gear reducer
- Please avoid the mounting of elastic elements on the input and output shafts
- The inversion of the input shaft rotation will also provide an inversion of output shaft rotation without changing the kinematical characteristics

## Technical characteristics

Size	165	200	250	315
Max. allowable axial load input shaft <b>ABE</b> (daN)	250	420	650	950
Max. allowable radial load input shaft <b>RBE</b> (daN)	728	1190	1940	3270
Max. allowable tilting torque input shaft <b>KME</b> (daNm)	102	190	370	720
Max. allowable axial load output shaft <b>ABA</b> (daN)	400	680	1070	1680
Max. allowable radial load output shaft <b>RBA</b> (daN)	728	1190	1940	3270
Max. allowable tilting torque output shaft <b>KMA</b> (daNm)	102	190	370	720
Additional fixed torque Mf1 (daNm)	4	6	8	10

### Indexing unit Number of stops:

1 - 2 - 3 - 4 - 6 - 8

Further numbers of stop on request

### Oscillating unit Angle of oscillation:

15° - 20° - 30° - 45°

Further angles of oscillation on request



# SOPAP



SOPAP ensures quality and reliability



## France

SOPAP SAS  
Z.A.M Châlons Nord  
1 Rue des Vignettes  
F-51520 La Veuve

Téléphone: +33 (0) 3 26 69 21 21  
Télécopie: +33 (0) 3 26 69 21 31  
E.mail: info.fr@sopap.com

## Deutschland Süd

SOPAP GmbH  
Mittelöschstrasse 21  
D-88213 Ravensburg

Telefon: +49 (0) 751 9507  
Telefax: +49 (0) 751 92583  
E.mail: info-sued.de@sopap.com

## España

SOPAP Automatización S.L.  
%Las Cruces nº6 – Bajo C  
E-28230 Las Rozas  
Madrid

Teléfono: +34 91 636 01 39  
Teléfax: +34 91 636 02 64  
E.mail: info.es@sopap.com

## Benelux

ADR  
Solvayweg 18  
6049 CP Herten-Roermond  
Nederland

Telefoon: +31 475 337379  
Fax: +31 475 337444  
E.mail: info.nl@sopap.com

## Brasil

Triaxis  
Rua Bulgária, 215  
Vila Santa Luzia  
09871-100 Sao Bernardo do Campo

Telefone: +55 11 4361 4977  
Fax: +55 11 4361 9004  
E.mail: info.br@sopap.com

## Deutschland Mitte

Konstruktionsbüro Becker  
Hch. Von Brentanoweg 2  
D-64683 Einhausen

Telefon: +49 (0) 6251 856601  
Telefax: +49 (0) 6251 987701  
E.mail: info-mitte.de@sopap.com

## USA

SOPAP LLC  
560-A Brookshire Road  
29651 Greer  
South Carolina

Telephone: +1 864 801 1450  
Fax: +1 864 801 1460  
E.mail: info-sc.usa@sopap.com

## USA

Rudy V. Colombi  
2696 Red Fox Trail  
48098 Troy  
Michigan

Telephone: +1 248 840 2377  
Fax: +1 248 540 7535  
E.mail: info-mi.usa@sopap.com

## Canada

DOLYX trading inc.  
171 Nicholson Crt.  
L7N 3N5 Burlington  
Ontario

Telephone: +1 905 631 6615  
Fax: +1 905 631 6244  
E.mail: info-on.ca@sopap.com