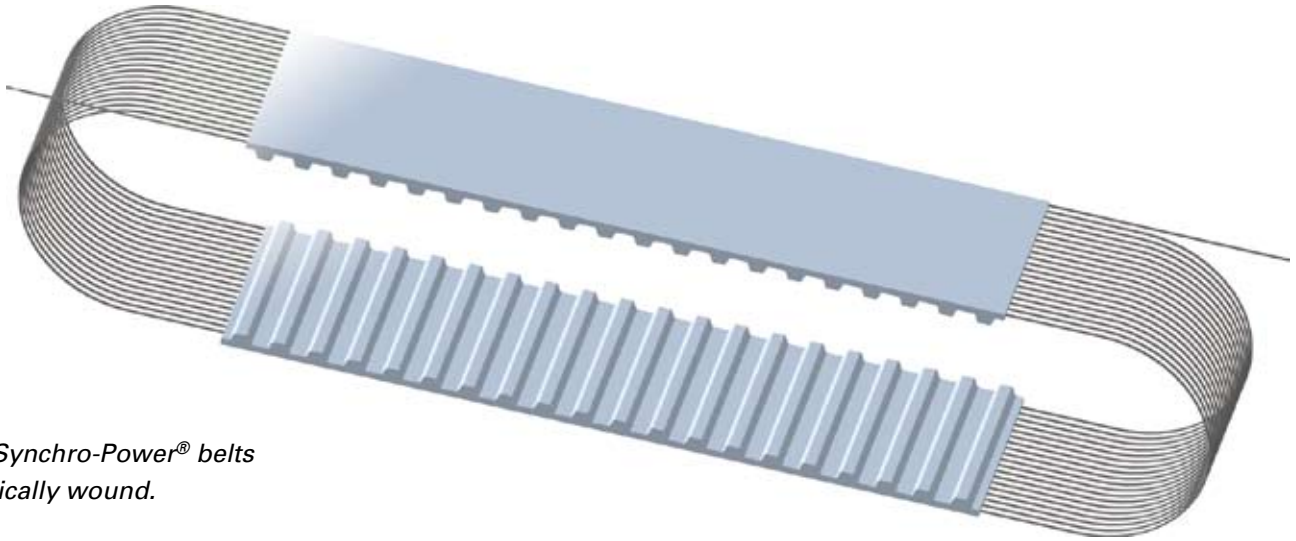




Gates Synchro-Power® Timing Belts

Gates Synchro-Power® Timing Belts

Most Gates Synchro-Power® belts are available with Kevlar® as well as steel reinforcing cords.



Gates Synchro-Power® belts are helically wound.

Specifications

Pitch			T2.5	T5	T5 DL	AT5	T10	T10 DL	AT10
			2.5 mm	5 mm	5 mm	5 mm	10 mm	10 mm	10 mm
Ultimate Tensile Strength per Inch or 25 mm Belt Width	Steel	lbf/in N/25 mm	260 1160	740 3290	740 3290	1360 6050	1650 7340	1650 7340	2250 10010
	Kevlar®	lbf/in N/25 mm	N/A N/A	1210 5380	1210 5380	N/A N/A	1490 6630	1490 6630	N/A N/A
Max Allowable Tension per Inch or 25 mm Belt Width	Steel or Kevlar®	lbf/in N/25 mm	60 270	180 800	180 800	340 1510	410 1820	410 1820	560 2490
Allowable Effective Tension for Belt Teeth (15 and More Teeth in Mesh)		lbf/in N/25 mm	60 270	200 890	200 890	290 1290	380 1690	380 1690	580 2580
Specific Belt Weight	Steel	lbf/ft/in kg/m/cm	0.024 0.014	0.035 0.021	0.044 0.026	0.058 0.034	0.075 0.044	0.101 0.059	0.111 0.065
	Kevlar®	lbf/ft/in kg/m/cm	N/A N/A	0.033 0.020	0.037 0.023	N/A N/A	0.062 0.036	0.082 0.048	N/A N/A
Minimum Number of Pulley Teeth			12	10	12	15	14	18	15
Min. Pitch Diameter			10 mm	16 mm	20 mm	24 mm	45 mm	57 mm	48 mm
Minimum Diameter of Tension Idler Running on Back of Belt		inch mm	0.787 20	1.125 30	0.787 20	2.375 60	3.125 80	2.250 57	4.750 120
Service Temperature Range			-5°C to +70°C (23°F to 158°F)						
Hardness			90 Shore A						
Standard Color			Blue						

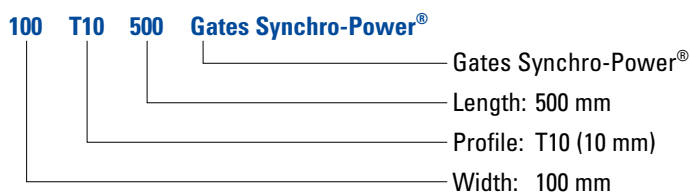
The specifications listed are based on Gates Mectrol's experience. However, our specifications and data do NOT cover all possible belt drive conditions. It is the responsibility of the belt drive system designer to ensure Gates Mectrol's belts are appropriate for a given system and application. The provided data is representative of our in-house experience and does not necessarily match product performance in industrial use. Gates Mectrol cannot assume any liability concerning the suitability and process ability of our products. We also cannot assume liability for process results, damages or consequential damages associated with the use of our products.

Gates Synchro-Power® Belt Types

T2,5 / T5 / T5 DL

No. of Teeth	Belt Length (mm)			No. of Teeth	Belt Length (mm)			No. of Teeth	Belt Length (mm)		
	T2.5	T5	T5 DL		T2.5	T5	T5 DL		T2.5	T5	T5 DL
30		150*		89		445		144		720	
33		165*		91		455		145		725	
37		185*		92	230		460	150		750	750
40		200*		95		475		152	380		
43		215*		96		480	480	156		780	
44		220*		98	245			160		800	
45		225*		100		500		163		815	815
48	120			102		510		168	420	840	
49		245*		103			515	170		850	
50		250*		105		525		172			860
51		255*		106	265			180		900	
52		260*		109		545		188		940	940
54		270*		110		550		192	480		
56		280*		112		560		198		990	
59	145	295*		114	285			200	500		
61		305*		115		575		215		1075	
64	160			116	290			216	540		
66		330*		118			590	220		1100	
68		340*		122	305	610		240	600		
70		350*		124		620	620	243		1215	
71	177.5	355*		126		630		248	620		
72	180			127	317.5			260	650		
73	182.5	365*		128		640		263		1315	
78		390*		130		650		276		1380	
80	200	400*		132	330	660		312	780		
82		410	410	138		690		366	915		
84		420		140		700		380	950		

To Order Gates Synchro-Power® Belts



Available Widths

Width	T2,5	T5	T10	AT5	AT10
Min.	4 mm	6 mm	10 mm	6 mm	16 mm
Max.	200 mm	400 mm	400 mm	400 mm	400 mm

*Selected belts are available up to 200 mm width

Gates Synchro-Power® belts, cast belts, are produced on dedicated tooling and are available from stock in the sizes listed. For belt lengths not listed, please consult a Gates Mectrol applications engineer.

Gates Synchro-Power® Belt Types

T10 / T10 DL

No. of Teeth	Belt Length (mm)	
	T10	T10 DL
26	260*	260
37	370*	
40	400*	
41	410	
44	440	
45	450	
50	500	
53	530	530
56	560	
60	600	
61	610	
63	630	630
66	660	660
69	690	
70	700	
72	720	720
73	730	
75	750	
78	780	
80	800	

No. of Teeth	Belt Length (mm)	
	T10	T10 DL
81	810	
84	840	840
85	850	
88	880	
89	890	
90	900	
91	910	
92	920	920
95	950	
96	960	
97	970	
98	980	980
100	1000	
101	1010	
108	1080	
111	1110	
114	1140	
115	1150	
121	1210	1210
124	1240	1240

No. of Teeth	Belt Length (mm)	
	T10	T10 DL
125	1250	1250
130	1300	
132	1320	1320
135	1350	1350
139	1390	
140	1400	
142	1420	1420
145	1450	
146	1460	
150	1500	
156	1560	
160	1600	
161	1610	1610
175	1750	
178	1780	
188	1880	1880
196	1960	
225	2250	

AT5 / AT10

No. of Teeth	Belt Length (mm)	
	AT5	AT10
45	225*	
50		500
51	255*	
56	280*	560
60	300*	
61		610
66		660
68	340*	
70		700
73		730
75	375*	
78	390*	780
80		800
81		810
84	420	840

No. of Teeth	Belt Length (mm)	
	AT5	AT10
89		890
91	455	
92		920
96		960
98		980
100	500	
101		1010
105		1050
108		1080
109	545	
115		1150
120	600	
121		1210
122	610	
125		1250

No. of Teeth	Belt Length (mm)	
	AT5	AT10
126	630	
132	660	1320
140		1400
144	720	
150	750	1500
156	780	
160		1600
165	825	
170		1700
180		1800
195	975	
210	1050	
225	1125	
300	1500	

Gates Synchro-Power® Timing Belts

Gates Synchro-Power® – the new generation of polyurethane timing belt sleeves introduced by Gates Mectrol.

Features of the new generation:

- Industry leading 400mm sleeve width
- High abrasion resistance through material research
- Consistent colour over time through UV-stabilization
- Overall quality improvement by improved process technology
- Exceptional surface finishing from improved mold manufacturing

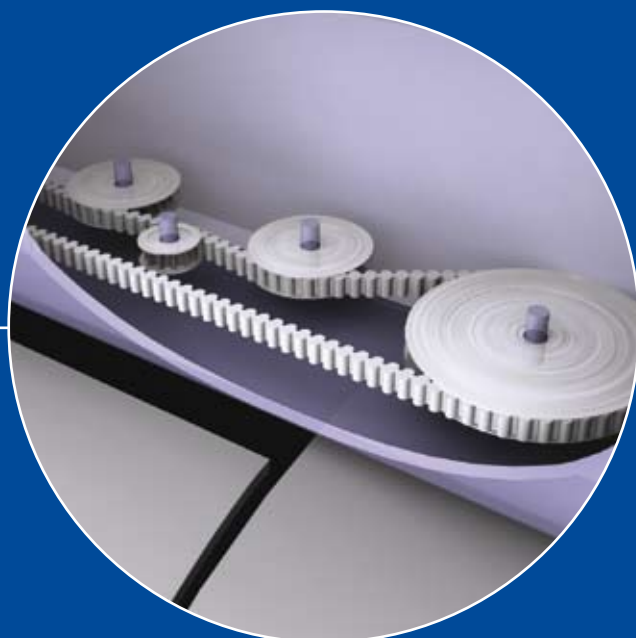
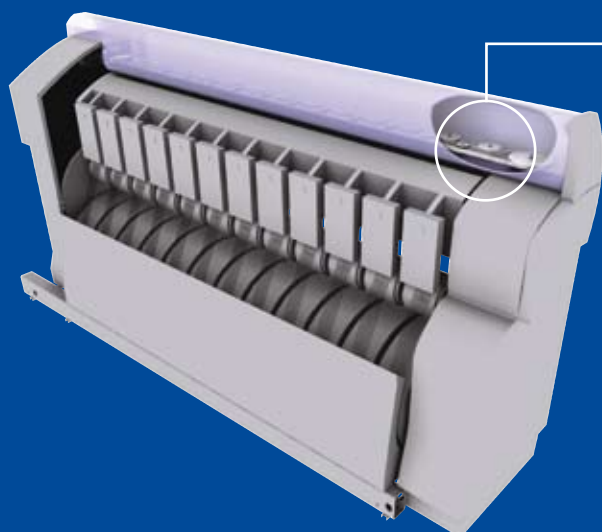
Application characteristics:

- Power transmission
- High power, high performance conveying
- Harsh environments
- Abrasion and chemical resistance

General features:

- High quality, thermo-set polyurethane designed specifically for timing belt applications
- Helically wound cords for high strength power transmission capabilities
- available with either steel or Kevlar® reinforcement
- Abrasion resistant
- Durable and cut resistant
- Clean and quiet operation
- Non marking
- Excellent chemical resistance

Double sided, truly end-less, Polyurethane timing belts are used in the textile industry for fiber winding.





USA

CORPORATE HEADQUARTERS

Gates Mectrol, Inc.
9 Northwestern Drive
Salem, NH 03079, U.S.A.
Tel. +1 (603) 890-15 15
Tel. +1 (800) 394-48 44
Fax +1 (603) 890-16 16
email: contact@gatesmectrol.com

EUROPE

Gates Mectrol GmbH
Werner von Siemens Strasse 2
64319 Pfungstadt, Germany
Tel. +49 (0) 61 57-97 27-0
Fax +49 (0) 61 57-97 27-272
email: info@gatesmectrol.de

MEXICO

Tomkins Poly Belt Mexicana S.A. de C.V.
Km. 96.5 Carr. Mexico
Cuautla No. 133
Cuautla Morelos Apartado
Postal 9 C.P. 62751, Mexico
Tel. +52 (735) 301-60 42
Fax +52 (735) 353-15 23
email: info@gatesmectrol.com.mx

AUSTRALIA

Gates Australia Pty Ltd.
1-15 Hydrive Close
South Dandenong, Victoria 3175,
Australia
Tel. +61 (3) 97 97-96 88
Fax +61 (3) 97 97-96 00
email: southpacsales@gates.com

SOUTH AMERICA

Gates Do Brazil Ind. Com. Ltda
Av. Santa Maria, 600
Jacarei, SP 12328-320, Brazil
Tel. +55 (11) 38 48-81 22
Fax +55 (11) 38 48-81 70
email: gatesmkt@gatesbrasil.com.br

ASIA

Gates Unitta Asia Company
4-26 Sakuragawa 4-chome,
Naniwa-KU
556-0022 Osaka, Japan
Tel. +81 (6) 65 63-12 66
Fax +81 (6) 65 63-12 76
email: guatc@gates.com