

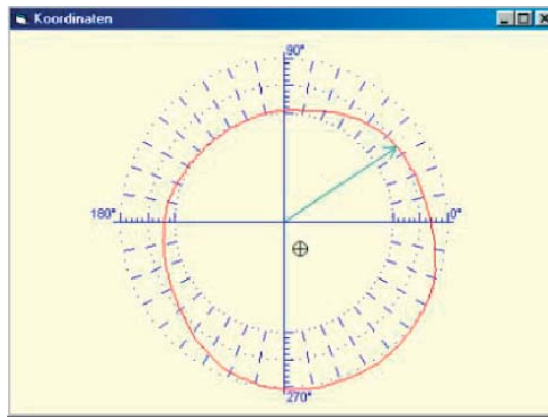


## WinRayRound™ – the universal system for the measurement of circularity, centricity and cylindricity

The WinRayRound™ software and a contactless clearance sensor make it possible to perform dynamic measurements of cylindrical objects during machine operation.

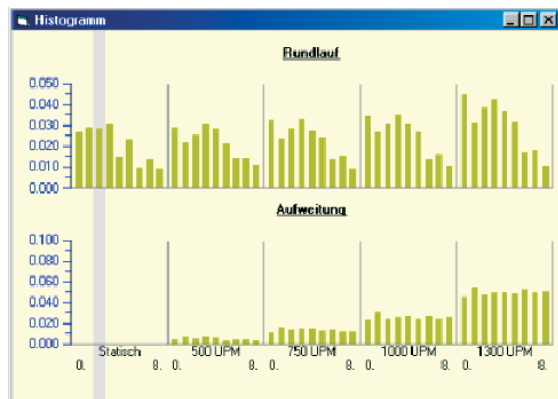
WinRayRound™ is a complete system for dynamic or semi-static measurement of circularity, centricity and deviation from nominal diameter.

If required, a dynamic analysis of the test object can be performed, during which WinRayRound™ measures and reports the expansion of the test object under load. The system consists of a distance-measuring device (clearance sensor) for measurement of the test object, a rotational speed sensor or rotor for determination of the rotational position of the test object, an interface card for the PC and the WinRayRound™ evaluation software.

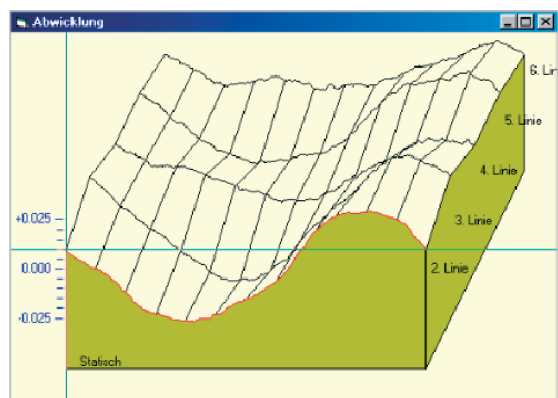


WinRayRound™ co-ordinates diagram

WinRayRound™ parameter input



WinRayRound™ histogram



WinRayRound™ developed view

### Measuring unit technical data

Clearance sensor	Laser distance sensor or other electronic distance-measuring device with analogue interface (0-10 VDC)
Signal processing	Signal processor/data concentrator (16-bit analogue/digital converter, PC interface card)
Angle/zero position	Rotor with zero point trigger/absolute rotational speed sensor

Database entries for measurement tasks:

- ★ Task number and description
- ★ Test object description and number
- ★ Remarks
- ★ Object diameter (nominal)
- ★ Object length
- ★ Tolerances (+tol./-tol.)

**RAYTEC SYSTEMS AG, Triststrasse 8, Postfach 186, CH-7007 Chur, Switzerland**

Tel. +41 (0)81 257 05 05, Fax +41 (0)81 257 05 09, sales@raytec.com, http://www.raytec.com

**WEIMER MESSTECHNIK, Nordstraße 13, D-75392 Deckenpfronn, Germany**

Tel. +49 (0)7056 963 00, Fax +49 (0)7056 963 01, info@weimer-messtechnik.de, http://www.weimer-messtechnik.de