

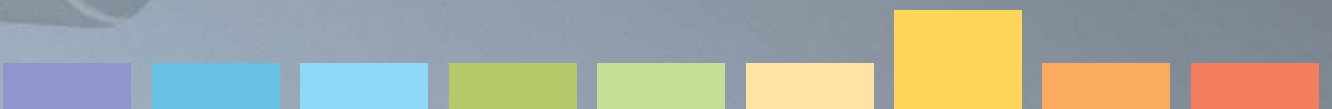
Serie TS



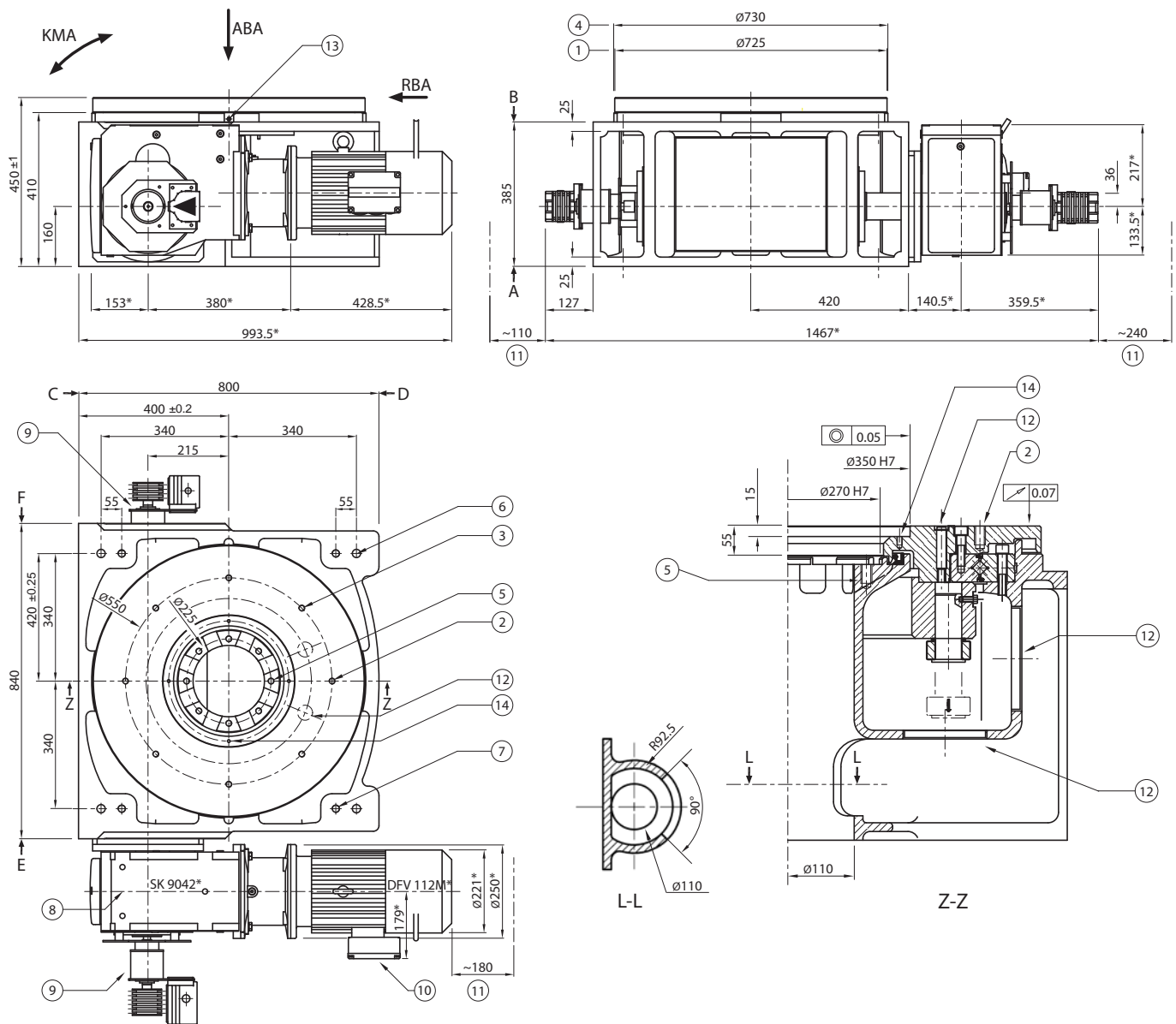
**SOPAP**



**Tsa 920**



# TSa 920



Warranty 3 years according our general sales conditions with possible extension up to 6 years\*\*.

\* Dimensions depending on selected gear motor

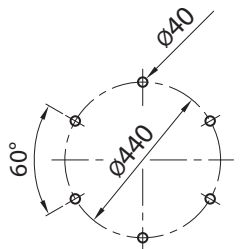
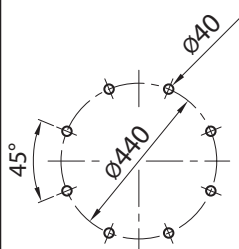
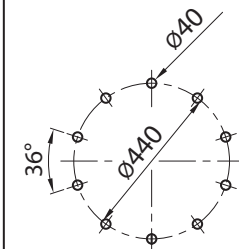
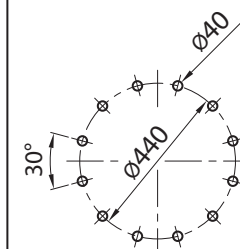
\*\* Subject to the realization of a set-up assessment by SOPAP.

- ① Rotating
- ② 8 x M16 x 25 on Ø550  
Positioning of an indexing station
- ③ Possible dowel on Ø550 Max. Depth 25  
Undertaken by customer
- ④ Fixed
- ⑤ 8 x M16 x 27 on Ø225  
Fixed
- ⑥ 4 x Ø22  
Faces A and B
- ⑦ 4 x M20  
Faces A and B
- ⑧ Reducer
- ⑨ Multi-tracks control unit,  
mountable either on face F,  
or reducer's side
- ⑩ Brake-motor
- ⑪ Space for disassembly
- ⑫ Access zone for cam follower  
maintenance
- ⑬ 2 lubricators at 180°
- ⑭ 4 x M8 x 12 on Ø320  
Positioning of an indexing station

## Technical Characteristics

Repeatability	$\pm 0,01$ mm on Rs = 230 mm
Indexing accuracy	$\pm 0,02$ mm on Rs = 230 mm
Maxi allowable axial load <b>ABA</b>	800 000 N
Maxi allowable tilting torque <b>KMA</b>	87 000 Nm
Maxi allowable radial load <b>RBA</b>	160 000 N
Weight with moto	~ 950 kg

**ABA, KMA, RBA:**  
Capacity of cross-roller-bearing

Number of stations	2 - 3 - 6	4 - 8 TP	5 - 10	12
Positioning of cam followers at indexing stations				
Quantity of followers	6	8	10	12

**TP:** Programmable Table  
**Additional Number of Stations by Request**



# SOPAP

SOPAP ensures quality and reliability



## France

SOPAP SAS  
Z.A.M Châlons Nord  
1 Rue des Vignettes  
F-51520 La Veuve

☎ +33 (0) 3 26 69 21 21  
☎ +33 (0) 3 26 69 21 31  
✉ info.fr@sopap.com

## Deutschland

SOPAP GmbH  
Mittelöschstrasse 21  
D-88213 Ravensburg

☎ +49 (0) 751 9507  
☎ +49 (0) 751 92583  
✉ info-sued.de@sopap.com

## España

SOPAP Automatización S.L.  
%Las Pérez Esquivel nº3  
28232 Las Rozas Madrid

☎ +34 91 636 63 49  
☎ +34 91 636 63 50  
✉ info.es@sopap.com

## USA

SOPAP LLC  
1307 East Maple Road, Suite A  
Troy, MI 48083

☎ +1 248 585 9327  
☎ +1 248 823 8755  
✉ info-mi.usa@sopap.com

## USA

SOPAP LLC  
PO BOX 436  
Greer, SC 29652

☎ +1 864 801 1450  
☎ +1 864 801 1460  
✉ info-sc.usa@sopap.com